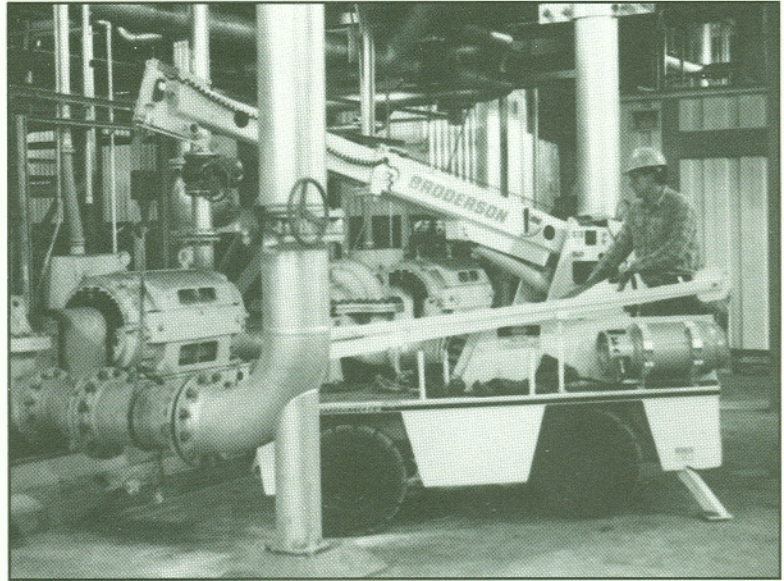


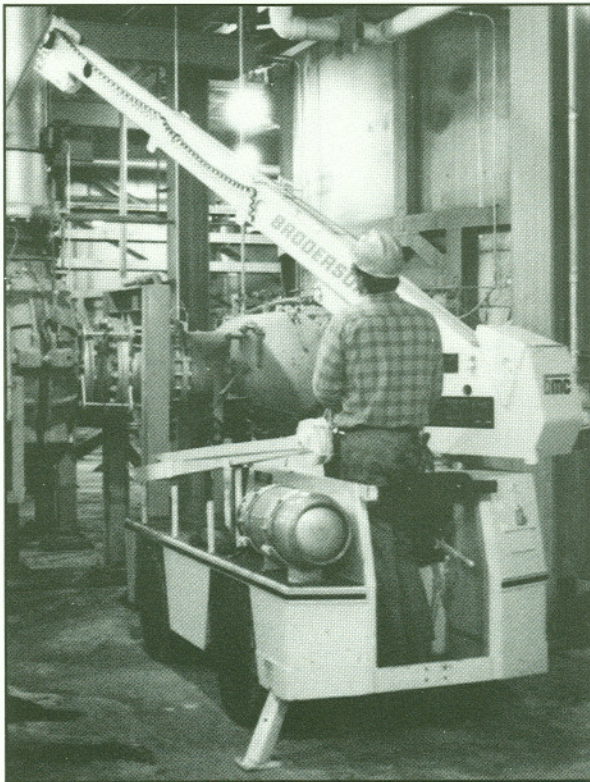
## **BRODERSON IC-20**

Allan Curtis, Sales Manager for Tri-State Equipment Company in Billings, Montana, has found a very satisfied Broderson IC-20 customer in Montana Power Company. Montana Power, a four turbine, coal fired, electrical generating plant in Colstrip, Montana, has just taken delivery of their second IC-20 last month (September 1986). They have found the Broderson IC-20 to be a highly productive and time saving Mobile Hydraulic Crane which is more versatile than a chain fall in many plant applications.

The Broderson IC-20 is used on the Turbine Deck, the Boiler Room, the Forced Draft Fan Room and what is affectionately known as "Scrubber Alley". With superior features of 5,000 pounds capacity, 90 degrees of boom rotation, 5 ft. 6 in. overall height, 4 foot width, vertical reach of 28 feet and horizontal reach of 22 feet, the little IC-20 is used in about every application imaginable.



*Satisfied Broderson IC-20 customer Montana Power Company in Colstrip, Montana.*



*"The Broderson IC-20 is as close as anything you'll ever find besides a chain fall to do the lifting we do in maintaining this power plant."*

To get up to the Turbine Deck the Broderson IC-20, equipped with a lifting sling kit, is raised by the large monorail crane. Once on the Turbine Deck, the IC-20 is used for general material handling and various maintenance duties.

In the Boiler Room, Forced Draft Fan Room and "Scrubber Alley" the Broderson IC-20 is used to repair and replace valves, pumps and motors. In the Boiler Room the IC-20 is also used to do maintenance on the gravel screens. The Broderson IC-20 is used when a pick is just more than one person can handle or when there is not anything to latch a chain fall to and extensive rigging would be required.

Al Violett, maintenance and mechanic lead man for Montana Power, says this: "The Broderson IC-20 is as close as anything you'll ever find besides a chain fall to do the lifting we do in maintaining this power plant!"

**BMC BRODERSON**  
Manufacturing Corp.

P.O. Box 14770, Lenexa, Kansas 66215 • (913) 888-0606